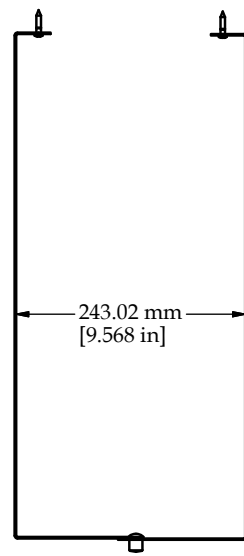
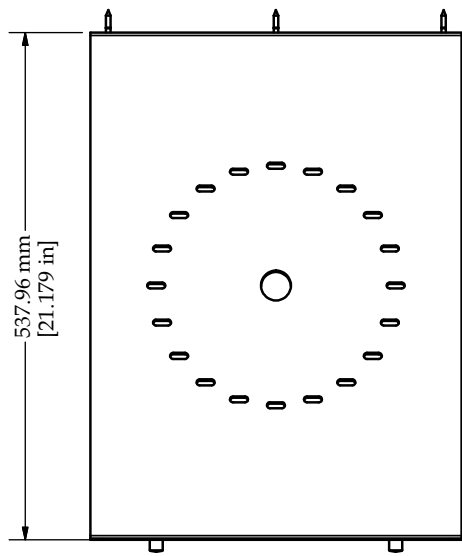
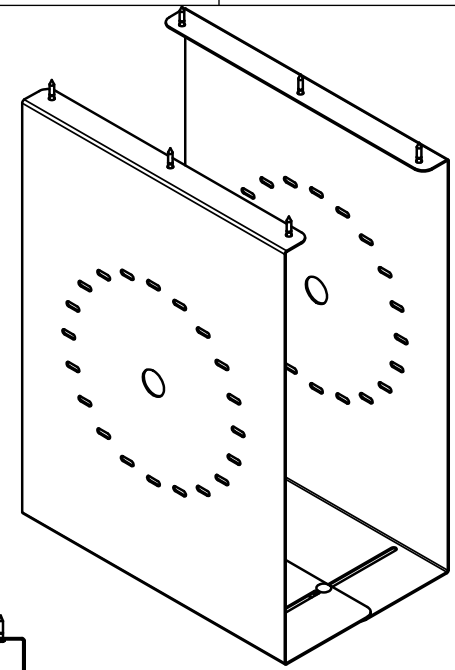
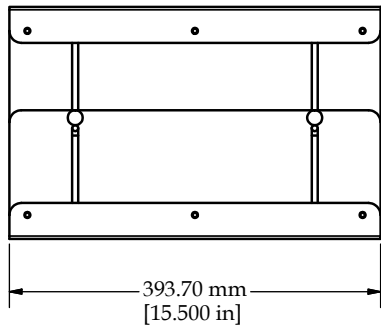


6 5 4 3 2 1



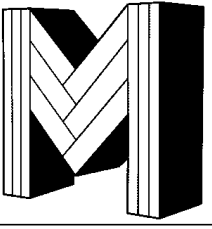
D
C
B
A

D
C
B
A

****UNLESS OTHERWISE NOTED****
 Fillets $\pm 0.01"$ Angles $\pm 1/2'$ All Angles Are 90°
 $X.X \pm 0.02"$ $X.XX \pm 0.01"$ $X.XXX \pm 0.005"$ Fraction $\pm 1/32'$
 All Burrs And Sharp Edges Removed

Material	Note
----------	------

Revision # A
Revision Date
Revised By



MELNIK
RESOURCES LTD.
 P.O. Box 144, 2467 Queen St.
 Mt. Brydges, ON N0L 1W0
 Tel: 519-264-2300 Fax: 519-264-2707
 www.melnik.ca

Title / Part 164-6593-1-1				
Subject / Project				

Designed By Chris	Base Scale 3:16	Date 8/25/2005	Page 1 of 4	Sheet Size A3
----------------------	--------------------	-------------------	----------------	------------------

6 5 4 3 2 1

6

5

4

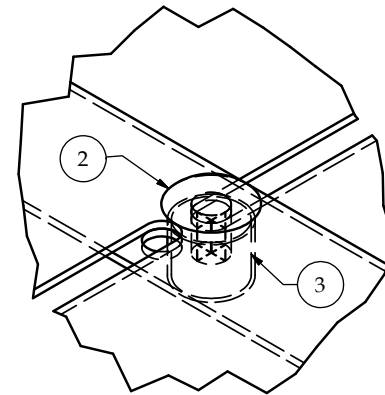
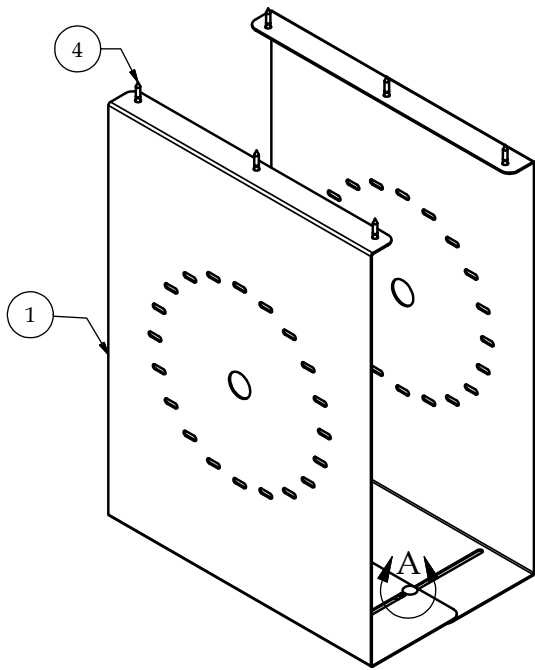
3

2

1

Parts List

ITEM	QTY	PART NUMBER	DESCRIPTION	cutlength	Cut	Pulled	Weld
1	2	121-3091-0-0	Plate, 16 gu				
2	2	118-6594-0-0	Rivet, aluminum with stainless pin				
3	2	139-1369-0-0	Cap, 1/2				
4	6	122-1462-0-0	Screw, #10 x 1, Pan				



DETAIL A
SCALE 1.25 : 1

****UNLESS OTHERWISE NOTED****

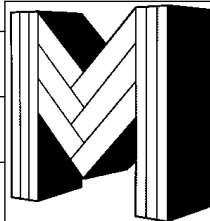
Fillets ± 0.01" Angles ± 1/2' All Angles Are 90'
X.X ± 0.02" X.XX ± 0.01" X.XXX ± 0.005" Fraction ± 1/32'
All Burrs And Sharp Edges Removed

Revision #

A

Revision Date

Revised By



MELNIK
RESOURCES LTD.

P.O. Box 144, 2467 Queen St.
Mt. Brydges, ON N0L 1W0
Tel: 519-264-2300 Fax: 519-264-2707
www.melnik.ca

Title / Part
164-6593-1-1

Subject / Project

Designed By Chris	Base Scale 3:16	Date 8/25/2005	Page 2 of 4	Sheet Size A3
----------------------	--------------------	-------------------	----------------	------------------

6

5

4

3

2

1

- A. Unpack your 164-6593-1-1 (Adjustable CPU Hanger) along with its accompanying hardware.
- B. Measure the outside width of your CPU and adjust the bottom of the Hanger to accommodate your CPU plus an additional 1/4". (No fasteners required)
- C. Select an appropriate place for your 164-6593-1-1 (Adjustable CPU Hanger) whilst observing possible crash locations.
- D. Screw left hand side to the underside of you table top.
- E. Remeasure the outside width of your CPU.
- F. Hold the right hand side to underside of table top, adjust so the inside dimension is at least 1/4" larger then the outside dimension of your CPU.
- G. Screw right hand side to the underside of your table top.

Note: If mounted near frame, use the optional 131-3031-1-1 (0.75 x 0.75 x 1.5 Plastic Bushing) and 122-6053-0-0 (#10 x 2.5" Pan Head Screw). These parts are available on special order.

<p>**UNLESS OTHERWISE NOTED** Fillets ± 0.01" Angles ± 1/2° All Angles Are 90° X.X ± 0.02" X.XX ± 0.01" X.XXX ± 0.005" Fraction ± 1/32" All Burrs And Sharp Edges Removed</p>		Revision #	 <p>MELNIK RESOURCES LTD. P.O. Box 144, 2467 Queen St. Mt. Brydges, ON N0L 1W0 Tel: 519-264-2300 Fax: 519-264-2707 www.melnik.ca</p>	Title / Part				
		Revision Date		Subject / Project				
Material	Note	Revised By		Designed By	Base Scale	Date	Page	Sheet Size
6	5	4	3	2	1	3 of 4	A3	